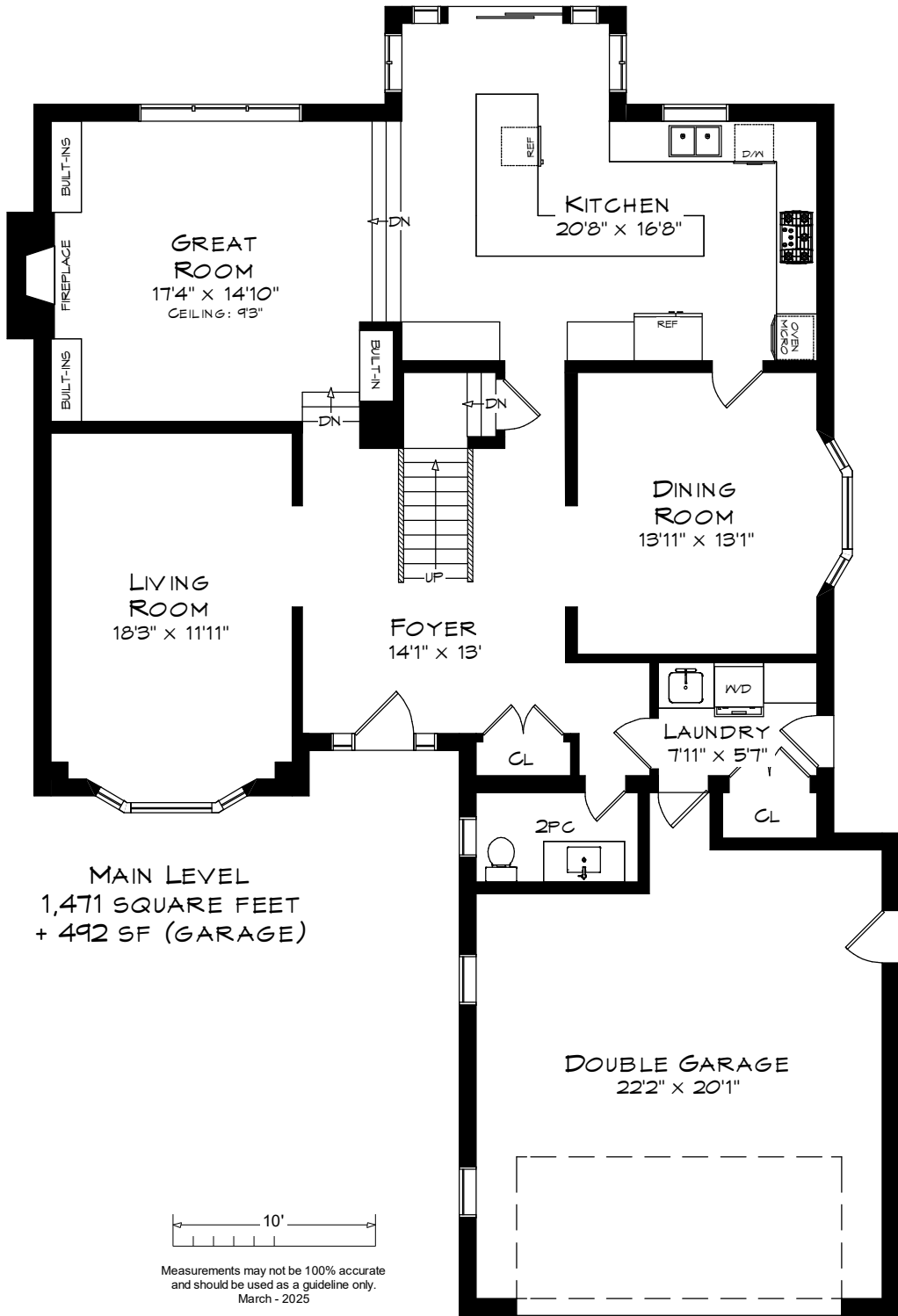
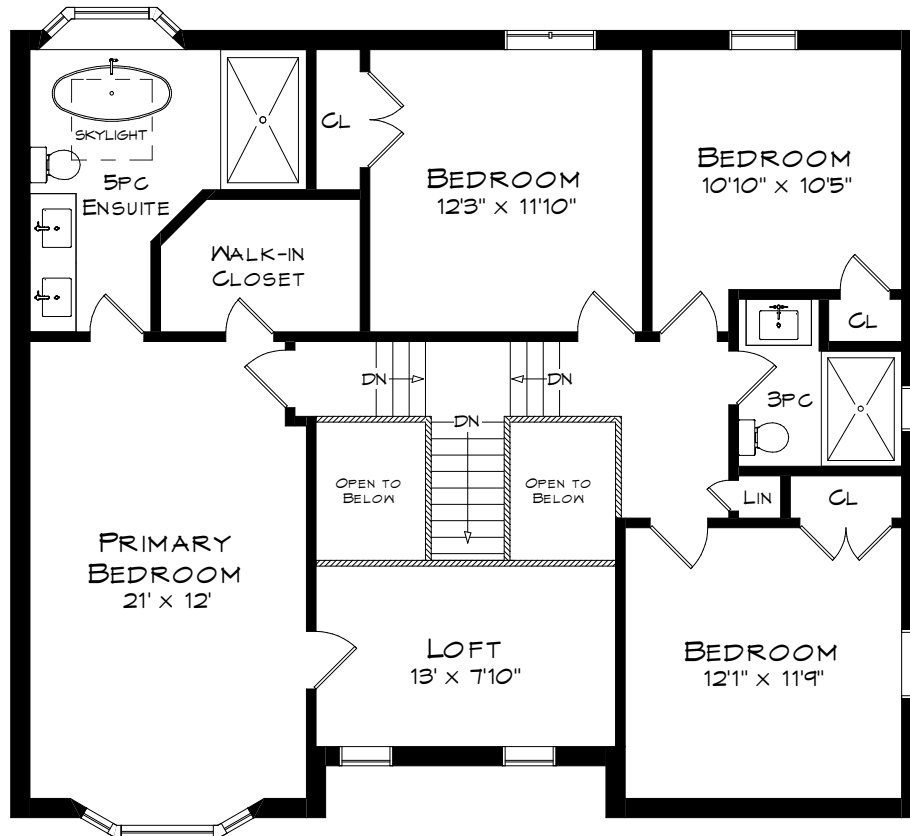


1225 OLD POST DRIVE

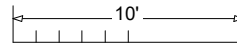
TOTAL SQUARE FOOTAGE
4,350 SQ.FT.



1225 OLD POST DRIVE

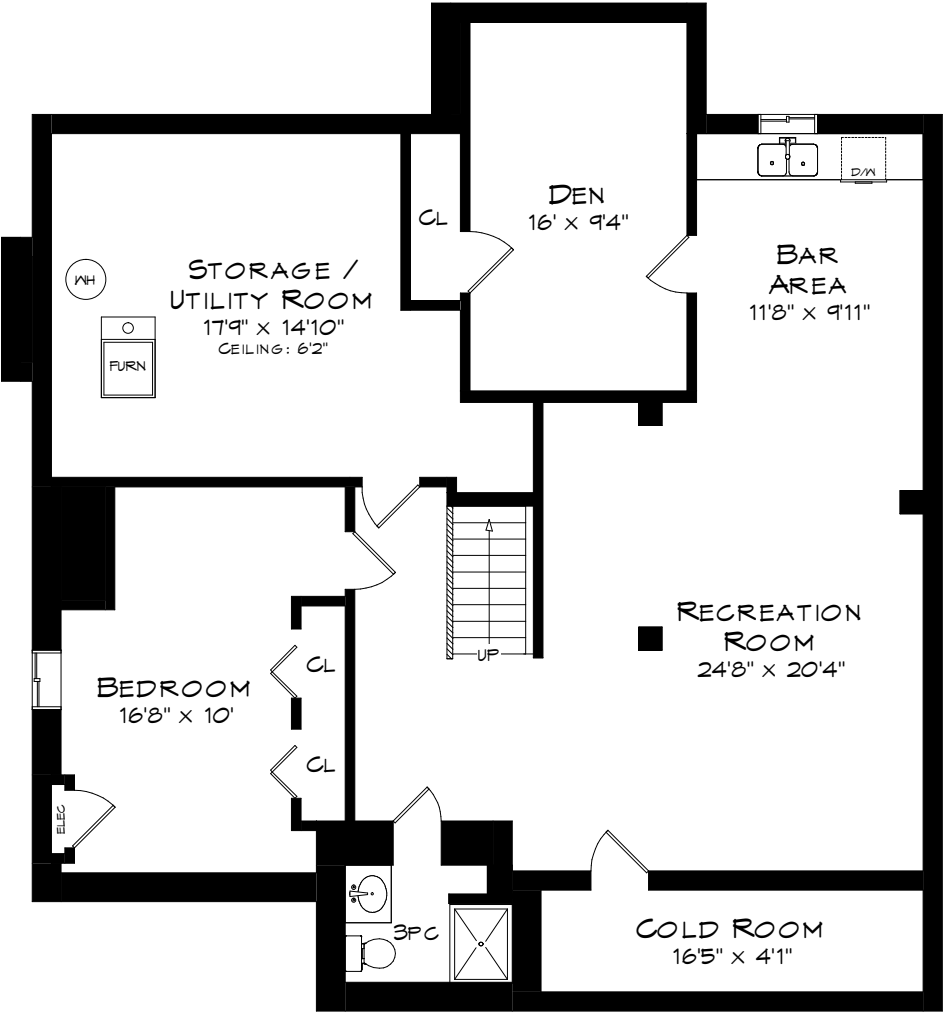


UPPER LEVEL
1,333 SQUARE FEET

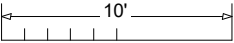


Measurements may not be 100% accurate
and should be used as a guideline only.
March - 2025

1225 OLD POST DRIVE



LOWER LEVEL
1,546 SQUARE FEET



Measurements may not be 100% accurate
and should be used as a guideline only.
March - 2025